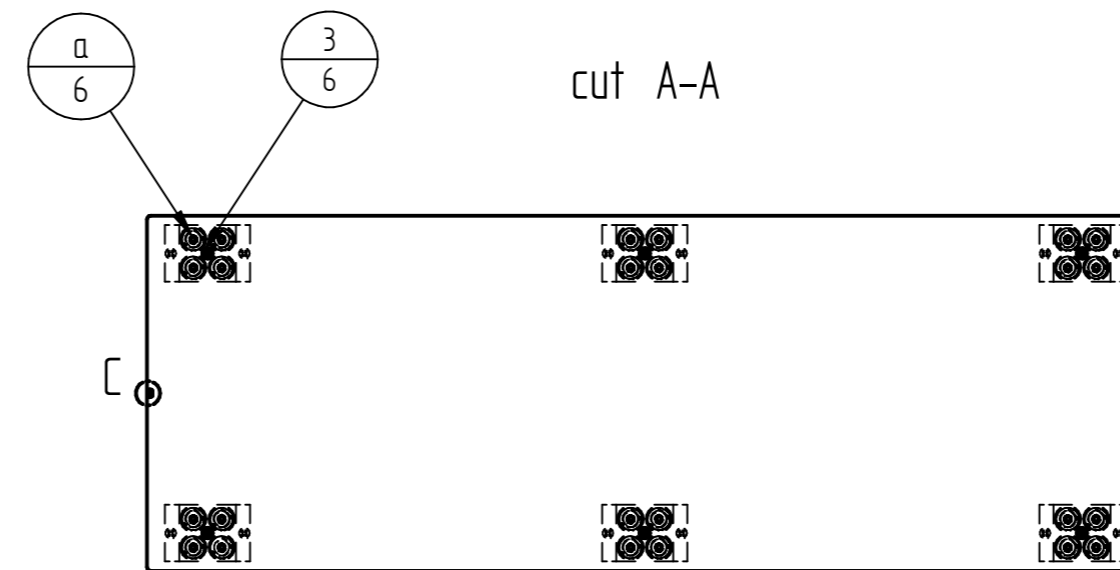
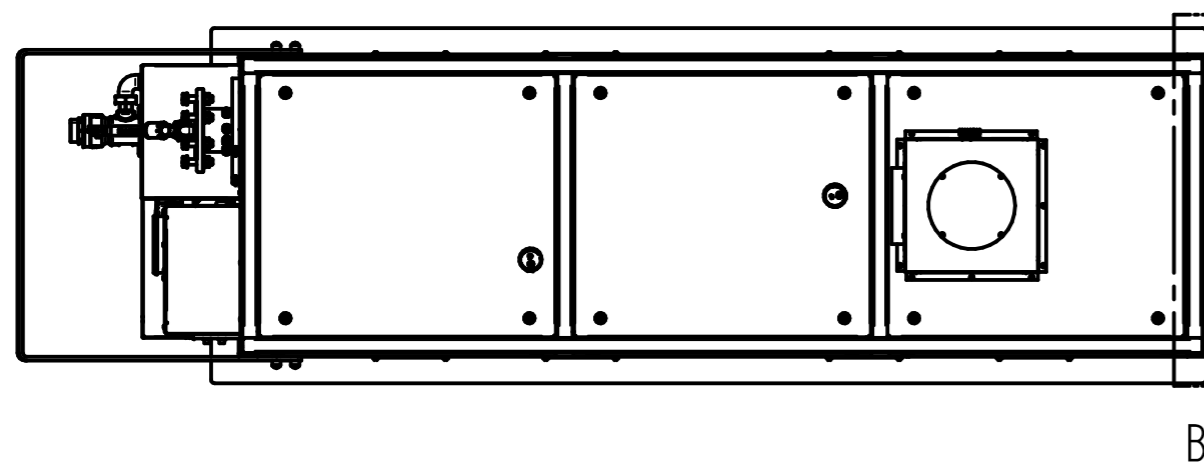
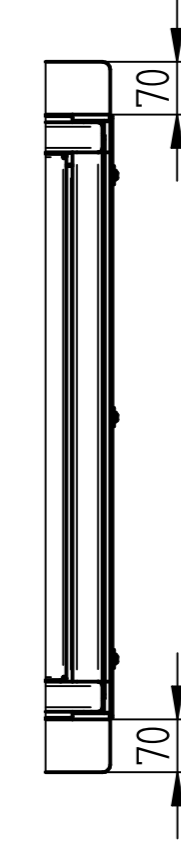
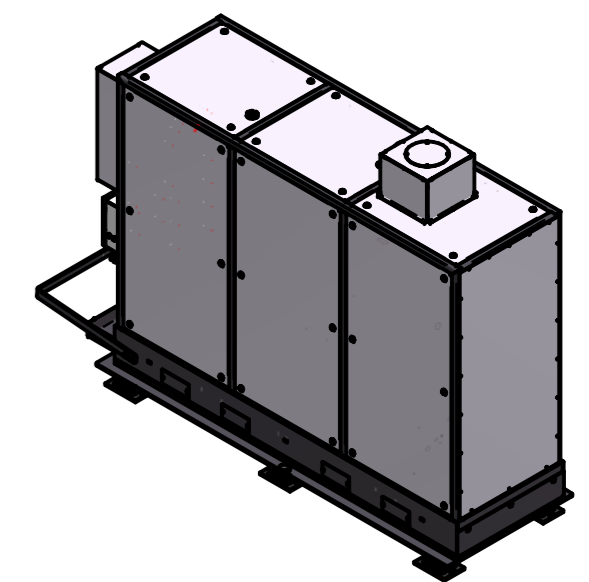


detail B
1:10



detail
1:2

B



Align the CHP unit flush at the front and at the sides with a distance of 50 or 90 mm on the vibration damping plate.

a = Spring block element 3150433

Back = B (see detail C)

The spring elements are attached to the foundation on site.

Pos.	Item No.	rev.	Title	Qty	ATTENTION: Unwinding data is for information purposes only! Information on outer dimensions and bending allowances do not dismiss the checker from inspection!	Tolerances according:	weight:	scale:1:40	particularity:				
	3241192	00	Positioning CHP unit 71.0 kW (eU) on vibration damping plate				2639,12 kg	material:					
1	3191449	00	Vibration damping plate 71.0 kW (eU)	1				title:					
2	3151157	00	Vibration decoupling / Sylodyn strips	1									
3	3070459	00	Countersunk head screw ISO 10642 M12 x 30 8.8 vz	6									
4	3240617	00	Spring block element set 71.0 kW (eU) BW	1									
							This drawing must not be copied, forwarded, reproduced or otherwise used in any other way.	part number: 3241691	raw part number:	sheet: 1 1 sheets			
							ind. modification	date	name	origin	modification	current index	material thickness: